

# Schedule of Rates & Charges 2018/19 Financial Year

All water supplied by Lower Burdekin Water is of a non-potable standard.

## Basis for Rates and Charges

Lower Burdekin Water ("LBW") is a Category 2 Water Authority, under the Water Act 2000 (Qld) ("the Act"). Subsections (2), (4) and (5) of section 572 of the Act empowers LBW to make and levy on its customers or ratepayers

- (a) charges; and
- (b) rates.

The Act provides for:

- Charges to be made and levied on a volumetric basis for water supplied; and
- Rates to be made and levied on a ratepayer's land in the authority area in relation to a water service on a ratepayer's irrigated agricultural land

## Area Based Charge

### Calculation of Rates:

- Sugar Cane*: to be charged on the basis of an assessable area as advised to LBW by Wilmar Sugar Australia Limited, **unless the grower can prove to the satisfaction of LBW that no crop of any kind was grown on that land at any time during the 2018/19 year.**
- Other Crops*: to be charged on the basis of an area under crop during the 2018/19 season.
- All growers are required to complete LBW's annual crop declaration.

### Rate per Hectare (GST Free)

- Sugar Cane*: a contribution is made by Wilmar Sugar Australia Limited for annual rates on sugar cane properties. The current contribution is one third of the annual rates per sugar cane property. For 2018/19 financial year the rates payable are as follows:

#### NORTHERN DIVISION

- Grower - \$92.79 per hectare
- Sugar Miller (Wilmar Sugar Australia Limited) - \$45.70 per hectare.
- Other Crops*: for 2018/19 the annual rate is \$138.49 per hectare.

#### SOUTHERN DIVISION

- Grower - \$90.43 per hectare
- Sugar Miller (Wilmar Sugar Australia Limited) - \$44.54 per hectare.
- Other Crops*: for 2018/19 the annual rate is \$134.97 per hectare.

## Water Charges

### OPEN WATER BASE RATE (GST FREE)

For all open water users 2018/19 financial year the charge is:

**Northern Division** - \$19.41 per megalitre (ML)

**Southern Division** - \$15.84 per megalitre (ML)

### OPEN WATER EXCESS RATE (GST FREE)

Usage over and above the nominal water allowance stated on the permit or licence (subject to any restrictions imposed by LBW in managing its water activities) will be subject to an excess charge of \$15.07 per megalitre. This charge will be in addition to the relevant open water base rate for each division of \$19.41 per megalitre for the Northern Division and \$15.84 per megalitre for the Southern Division

### NON-COMMERCIAL ENTITIES AND STOCK & GARDEN SUPPLY

- Annual usage charge - \$50 (GST free)

### AGRICULTURAL DEVELOPMENTS

#### Within the Authority Area

New agricultural developments requiring access to open water will be assessed on a case by case basis on application and may be subject to contribution charges associated with LBW's:

- Existing infrastructure;
- Existing water allocation allowance;
- Ongoing operations and maintenance costs; and
- Any new infrastructure and water allocation entitlement required to service the development.

#### Outside the Authority Area

Agricultural developments requiring access to water from within the LBW authority area will be assessed on a case by case basis on application and may be subject to contribution charges associated with LBW's:

- Existing infrastructure;
- Water allocation allowance;
- Ongoing operations and maintenance costs; and
- Any new infrastructure and water allocation allowance required to service the development.

### COMMERCIAL AND INDUSTRIAL WATER RATE (GST Free)

Charges associated with non-rated entities.

### Temporary Access

For all temporary non-rate paying entities that are granted approval to use LBW's WAE supplied through LBW's infrastructure for non-irrigation purposes, the rate for the 2018/19 financial year is \$48.10 per megalitre with the minimum charge set at one (1) megalitre.

### Permanent Access

New developments requiring access to water will be assessed on a case by case basis and may be subject to contribution charges associated with LBW's:

- Existing infrastructure;
- Existing water allocation entitlement;
- Ongoing operations and maintenance costs; and
- Any new infrastructure and water allocation allowance required to service the development.

## BURDEKIN SHIRE COUNCIL

For the 2018/19 the Council's annual fixed charge is:

**Northern Division** - \$32.02 per megalitre (GST free) for usage up to and including 5,000ML

**Southern Division** - \$32.02 per megalitre (GST free)

For Council usage in excess of 5,000 megalitres per annum in the Northern Division the following charges apply:

- Headworks upgrading - \$16.45 per megalitre
- Purchase of allocation - \$48.78 per megalitre
- Annual Fixed Charge - \$16.23 per megalitre
- TOTAL = \$81.46 per megalitre

### OPEN WATER HEADWORKS CHARGE (incl. GST)

For 2018/19 the once-off charge upon approval of open water supply applications are as follows:

- Up to and including a 50mm pump - \$110.00 (unmetered)
- Up to and including a 50mm pump - \$500.00 (metered)
- >50mm and up to and including a 150mm pump - \$3,000.00
- > 150mm pump - \$4,400.00

This fee does not include the cost of installation materials.

### WATER ALLOCATION ENTITLEMENT HOLDERS (FORMERLY RIPARIAN PUMPERS)

LBW has relinquished the management of water allocation entitlement ("WAE") holders back to Sunwater. As part of the Distribution Operation Licence (DOL) responsibilities LBW will continue to read the WAE meters.

### Closed Pondage Pumping

Pumping from closed surface water pondage will be considered under the following criteria:

- Sites over ten (10) meters distance from the nearest edge of LBW's channel do not apply.
- Individual benefits shall be determined by LBW, test of time to demonstrate the benefit.
- Pump without rostering.

### Future Amendments

Any future wording or rate changes to this flyer will be communicated via electronic mediums and uploaded on the LBW website.

### Right to Information (Incl. GST)

Section 5(1)(b) of the *Right to Information Regulation 2009* provides that the charge for time spent by an agency in searching for, or retrieving a document, or in making, or doing things related to making a decision on an application for access is \$6.70 for each 15 minutes or part thereof for more than five hours. A standard application fee of \$43.35 is applicable for any applications received by LBW.

### Overdue Accounts (Interest Charges)

LBW will charge interest on all accounts which are not paid within 60 days of the date of issue. The rate of interest charged will be the ANZ Bank Business Reference Rate as published by the ANZ from time to time plus four (4) percentage points rounded to the nearest whole number. The interest rate is reviewed monthly.

### Photocopying Charges (Incl. GST)

Size A4	Black & White	= \$0.50 per copy
	Colour	= \$0.80 per copy
Size A3	Black & White	= \$1.00 per copy
	Colour	= \$1.60 per copy

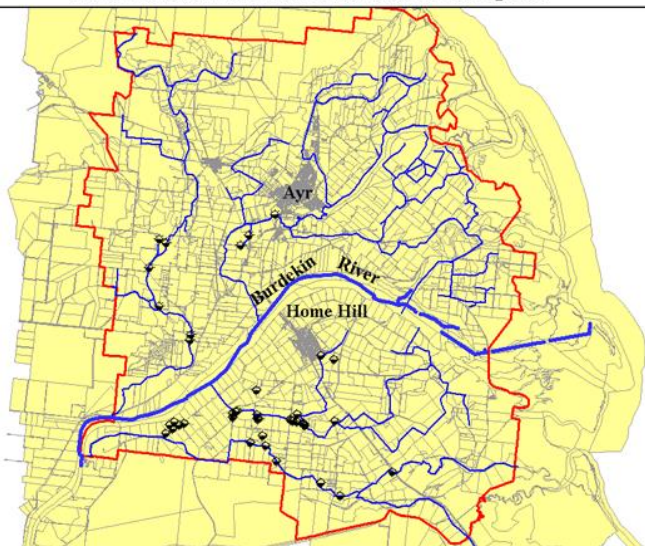
### Equipment Hire (Incl. GST)

Rates for specific plant and equipment are on a case by case basis and only applicable when performing schedule capital and maintenance-based works on LBW Infrastructure only

### Solicitor/Property Search

\$55.00 per title search (GST inclusive)

Lower Burdekin Water Scheme Network and Recharge Pits



### Office Locations

#### Northern Office

112 Airdmillan Road  
AYR QLD 4807

PO Box 720  
AYR QLD 4807

Phone: (07) 4783 1988  
Fax: (07) 4783 1264

#### Southern Office

28 Ninth Street  
HOME HILL QLD 4806

(07) 4782 1703  
(07) 4782 2039

Email: [admin@lowerburdekinwater.com.au](mailto:admin@lowerburdekinwater.com.au)

Website: [www.lowerburdekinwater.com.au](http://www.lowerburdekinwater.com.au)

ABN: 42 671 751 039

Office Hours – 7:30am to 4:30pm  
Monday to Friday